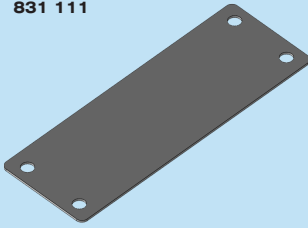


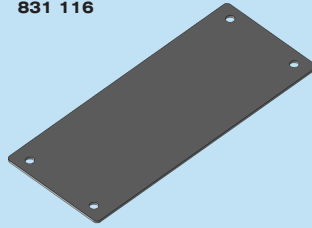
❖ CABLE GLAND PLATE

831 110
831 111



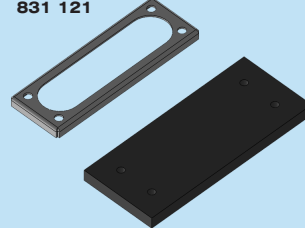
FL13

831 115
831 116



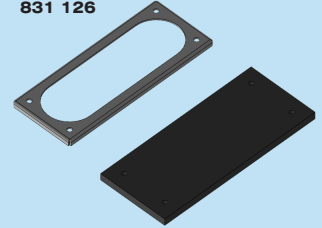
FL21

831 120
831 121



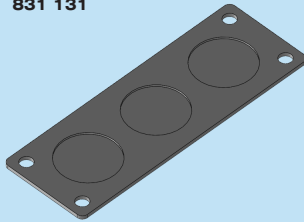
FL13

831 125
831 126



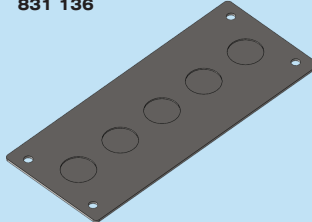
FL21

831 130
831 131



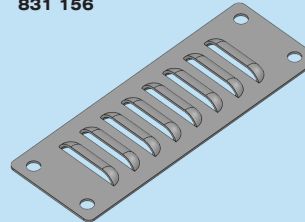
FL13

831 135
831 136



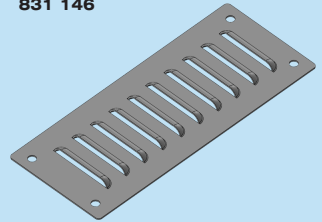
FL21

831 155
831 156



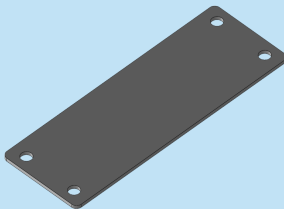
FL13

831 145
831 146



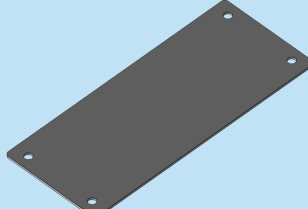
FL21

831 210



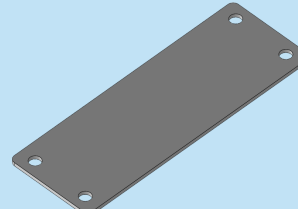
FL13

831 211



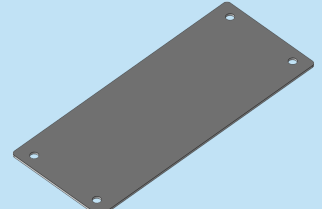
FL21

831 215



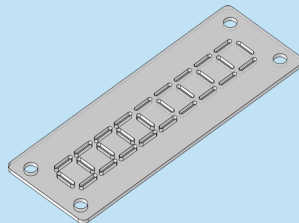
FL13

831 216



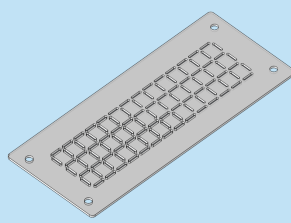
FL21

831 220



FL13

831 221



FL21

ORDER NO RAL 7035	ORDER NO RAL 9010	TYPE	DESCRIPTION	DIMENSIONS (WxH)mm	THICKNESS	QTY
831 110	831 111	SGFL 13	Steel Gland FL13	134x47	1.5mm	01
831 115	831 116	SGFL 21	Steel Gland FL21	214x88	2.0mm	01
831 120	831 121	SSEGFL 13	Self Sealing Gland FL13	134x47	1.5mm	01
831 125	831 126	SSEGFL 21	Self Sealing Gland FL21	214x88	2.0mm	01
831 130	831 131	KGFL 13	Knockout Gland FL13	134x47	1.5mm	01
831 135	831 136	KGFL 21	Knockout Gland FL21	214x88	2.0mm	01
831 155	831 156	LGFL 13	Louver Gland FL13	134x47	1.5mm	01
831 145	831 146	LGFL 21	Louver Gland FL21	214x88	2.0mm	01

ORDER NO	TYPE	DESCRIPTION	DIMENSIONS (WxH)mm	THICKNESS	QTY
831 210	PCGFL13	Polycarbonate Gland FL13	134x47	2.0mm	01
831 211	PCGFL21	Polycarbonate Gland FL21	214x88	2.0mm	01
831 215	ALGFL13	Aluminium Gland FL13	134x47	2.0mm	01
831 216	ALGFL21	Aluminium Gland FL21	214x88	2.0mm	01
831 220	PCGPFL13	Polycarbonate Gland Pre Punched FL13	134x47	2.0mm	01
831 221	PCGPFL21	Polycarbonate Gland Pre Punched FL21	214x88	2.0mm	01

UPDATE ON	27/04/2022	REPLACE OF	07/02/2022
-----------	------------	------------	------------